



SHINING 3D®

EP-P3850 SLS 3D Printers



SHINING 3D EP-P3850, adopts selective laser sintering (SLS) technology is designed to meet functional tests in industrial applications at an affordable price. With the build size of 380 x 380 x 500 mm, EP-P3850 covers the medium build volume range and delivers high-property thermoplastics.

APAC Headquarters

Hangzhou, China
SHINING 3D Tech. Co., Ltd.
No. 1398, Xiangbin Road, Wenyan,
Xiaoshan, Hangzhou, Zhejiang, China
P: +86-571-82999050

Email: sales@shining3d.com

EMEA Regional Office

Stuttgart, Germany
SHINING 3D Technology GmbH.
Panorama, Heilbronner straÙe 86,
70191, Stuttgart, Germany
P: +49 (0)711 28444089

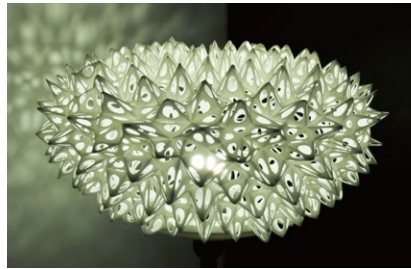
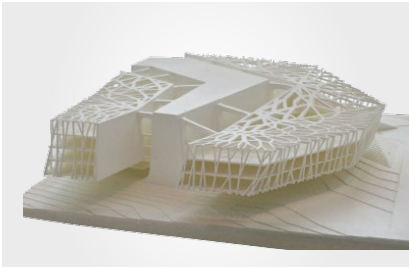
Web: www.shining3d.com / www.einscan.com

Americas Regional Office

San Francisco, United States
SHINING 3D Technology Inc.
1740, César Chávez St. Unit D.
San Francisco, CA 94124
P: +1415 259 4787



EP-P3850 SLS 3D Printers



Features & Benefits:

- Detachable forming cylinder to optimize printing efficiency
- Uniformed heat control system to offer optimized mechanical properties
- Offer broad portfolio of 3D printing materials with high powder recyclability rates
- Break the constraints of complex geometries, and maximize design freedom
- No need for support material
- High resolution and superior surface finish

Specification

Model	EP-P3850
Material	PA12 , PA12GF , PP , TPU , PE , TPE
Build Volume	380 x 380 x 500 mm
Layer Thickness	0.1 mm (0.08-0.3 mm to choose)
Build Accuracy	±0.15 mm (part size ≤100 mm) , ±0.15% (part size ≥100 mm)
Material Feed Mode	Automatic loading, bi-directional powder feeding
Laser Power	CO ₂ laser, 55 w
Scanning System	Dynamic scanning focus
Scanning Speed	7.8 m/s (max)
OS System Support	Windows 7
Control Software	Eplus 3D printing software
Air Supply	Compressed air, N ₂ protective gas
Power Supply	380 v, 50 Hz, 3-phase
Output Data Format	STL or other convertible file
Dimension	1400 x 1300 x 2450 mm (L x W x H)
Machine Weight	1600 kg
Work Temperature	15-30 °C

* Notice: SHINING 3D reserves the right to explain any alteration of the specification and pictures.

APAC Headquarters
Hangzhou, China
SHINING 3D Tech. Co., Ltd.
No. 1398, Xiangbin Road, Wenyan,
Xiaoshan, Hangzhou, Zhejiang, China
P: +86-571-82999050

Email: sales@shining3d.com

EMEA Regional Office
Stuttgart, Germany
SHINING 3D Technology GmbH.
Panorama, Heilbronner straÙe 86,
70191, Stuttgart, Germany
P: +49 (0)711 2844089

Web : www.shining3d.com / www.einscan.com

Americas Regional Office
San Francisco, United States
SHINING 3D Technology Inc.
1740, César Chávez St. Unit D.
San Francisco, CA 94124
P: +1415 259 4787